

DE STIJL
2-STOREY DUPLEXES

LIVE THE ART™
BOUTIQUE RESIDENCES - COURTICE.





LIVE THE ART™

REDEFINING MAIN STREET

Live the art at Mondria 1, a community that is changing the skyline of Toronto's New East Side.

Leave the noise and 24/7 hustle of downtown to the pigeons and wake up to birdsong from your balcony. Breathe deep in country air without sacrificing the ease of city living. Live where stars light up the night sky. Landscaped parks, comfortable coworking spaces, and spectacular views from the rooftop await, with convenient shopping and gourmet dining just steps away.

Come home to the future. Come home to Mondria 1.

THE DE STIJL COLLECTION

LIFE, STYLED WITH COMFORT

Mondria 1's two gem De Stijl units span the first and second floors. Two-storey townhome-style units are integrated into the main building, combining the comfort of a traditional house and the convenience and amenities of condominium living. Modern, open-plan living-dining and chef's kitchen, a flex room, and a guest bathroom occupy the first floor, with comfortable bedrooms, full baths, and balcony views on the second. The main floor's huge windows open onto a private deck, ideal for year-round barbecues.

The two De Stijl units can be found on the first and second floors of Mondria 1, and the option has been held open to create others within the building. Talk to us about the opportunity to create De Stijl penthouses spanning the fifth and sixth floors, where they can incorporate entertainment-sized outdoor terraces and breathtaking views.



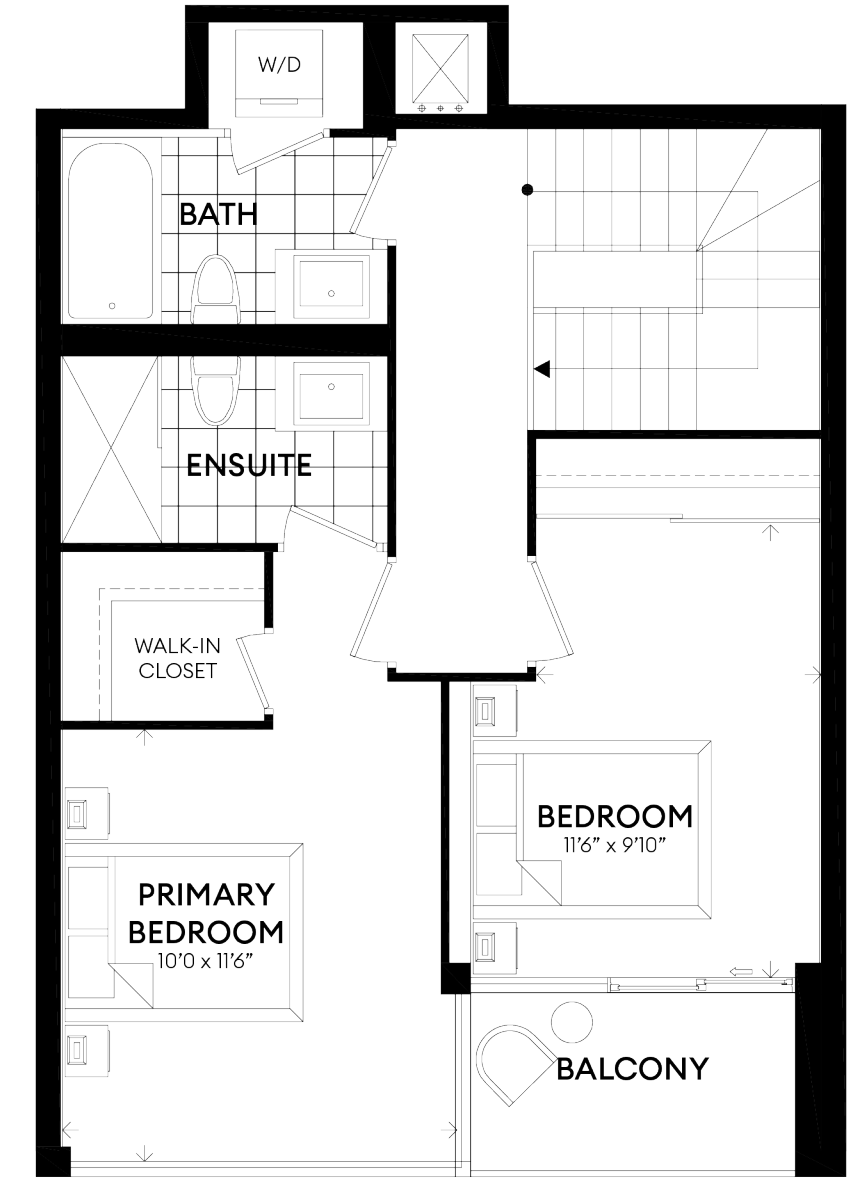
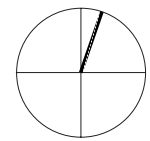
MONDRIAN

UNIT 101

SUITE 1242 ft²
PATIO 138 ft²
BALCONY 43 ft²

3 BEDROOMS
3 BATHROOMS

TWO-STOREY UNIT
DE STIJL COLLECTION



© 2021 Monde Development Group Inc. Project names and logos are Trademarks of their respective owners. All rights reserved. Building and views not to scale. All dimensions are approximate and subject to normal construction variances. Dimensions may exceed the usable floor area. Some features and finishes herein are upgrades or are for illustrative purposes only and may not be available. Furniture is displayed for illustration purposes only and does not necessarily reflect the electrical plan for the suite. Suites are sold unfurnished. Balcony, terrace, and façade variations may apply. Contact a sales representative for further details. Furniture, BBQs, and planter locations of balconies or terraces are for illustration purposes only and subject to change. Illustrations are artist's concepts only. Mondria 1 address, 1607 King St. E subject to change pending city approvals. Sizes and specifications subject to change without notice. E. & O.E. May 2021

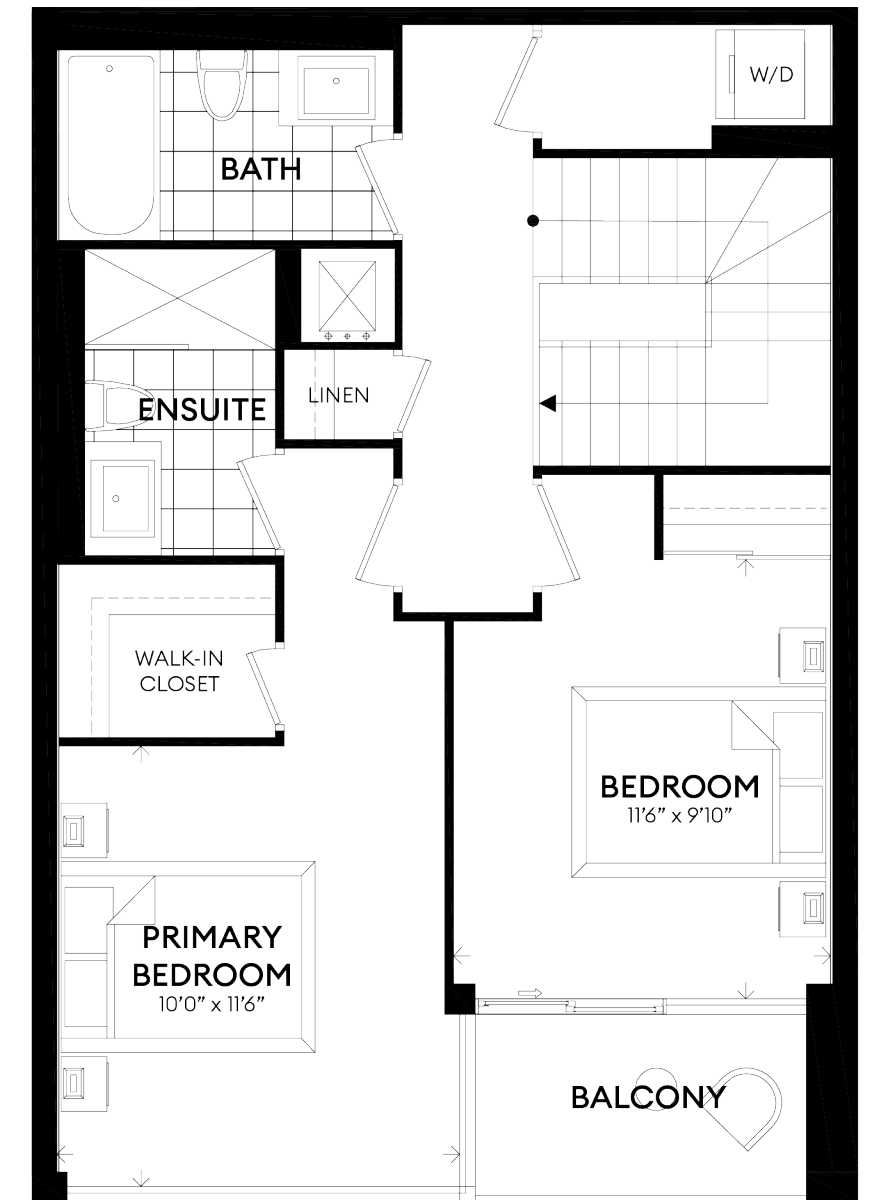
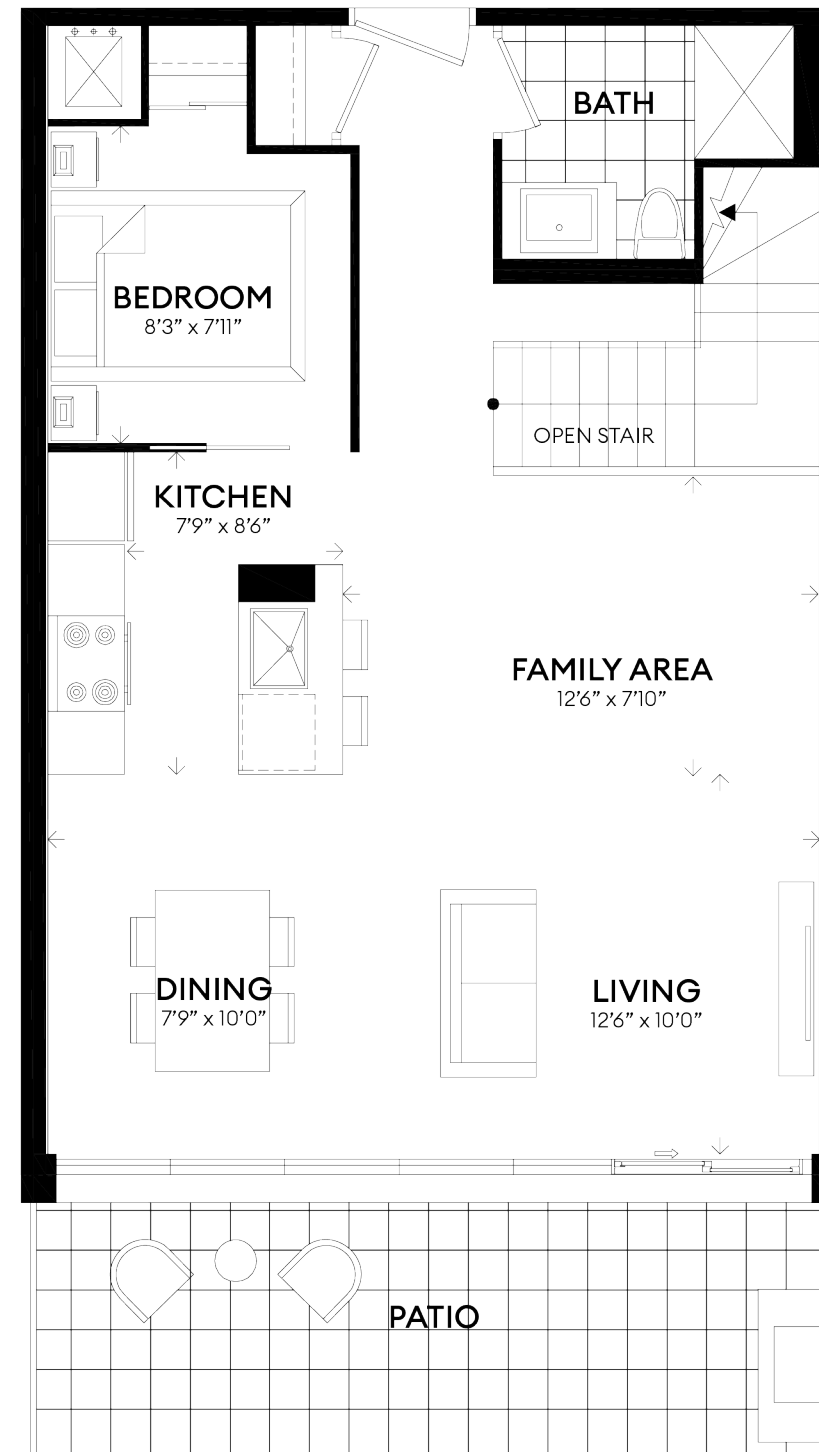
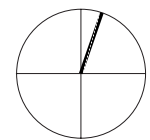
VAN DOESBURG

UNIT 102

SUITE 1273 ft²
PATIO 139 ft²
BALCONY 41 ft²

3 BEDROOMS
3 BATHROOMS

TWO-STOREY UNIT
DE STIJL COLLECTION



© 2021 Monde Development Group Inc. Project names and logos are Trademarks of their respective owners. All rights reserved. Building and views not to scale. All dimensions are approximate and subject to normal construction variances. Dimensions may exceed the usable floor area. Some features and finishes herein are upgrades or are for illustrative purposes only and may not be available. Furniture is displayed for illustration purposes only and does not necessarily reflect the electrical plan for the suite. Suites are sold unfurnished. Balcony, terrace, and façade variations may apply. Contact a sales representative for further details. Furniture, BBQs, and planter locations of balconies or terraces are for illustration purposes only and subject to change. Illustrations are artist's concepts only. Mondria 1 address, 1607 King St. E subject to change pending city approvals. Sizes and specifications subject to change without notice. E. & O.E. May 2021

THE PRIVÉ LIFESTYLE

LUXURY HAS A NEW NAME.

Experience the infinite possibilities of luxury with the Privé Signature Series. Privé units are designer decorated and fully furnished, ready to simply open the door and start living. At Monde, we know that luxury doesn't just mean space - it means effortless living; with this in mind, Privé Signature suites encompass both more efficient Futurist and Modernist layouts and a more expansive Expressionist Penthouse. This is the full custom home experience, brought to the scale of boutique condominium living.

There are three Privé Signature units in Mondria 1, with the additional option to create your very own. Contact us to speak to your personal designer today!



MONDRIA 1 BALLROOM



www.mondrial.com
www.mondedevelopment.com